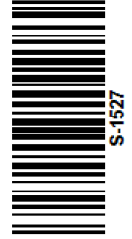




# Peninsula Laboratories International, Inc.

305 Old County Road, San Carlos, CA 94070  
Tel: (650) 801-6090  
Fax: (650) 595-4071



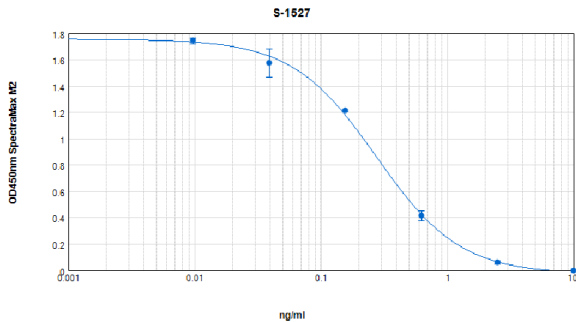
## Cat. No. S-1527 Secretin (human)

(for human serum and plasma samples)

**SPECIFICATIONS:** Extraction-free kit for human serum/plasma

**STANDARD:** 1ug H-His-Ser-Asp-Gly-Thr-Phe-Thr-Ser-Glu-Leu-Ser-Arg-Leu-Arg-Glu-Gly-Ala-Arg-Leu-Gln-Arg-Leu-Leu-Gln-Gly-Leu-Val-NH2

**PROTOCOL:** V (Ab1hr.Std2hr.BtON)  
**RANGE:** 0-10 ng/ml  
**AVERAGE IC<sub>50</sub>:** 0.3 ng/ml  
**SHELF-LIFE:** One year from production date



Suggested Preparation of Standards		
	ng/ml	Range: 0.01 to 10 ng/ml
<b>Stock</b>	1000	
<b>S1</b>	10.00	Add 10 µl stock + 990 µl diluent
<b>S2</b>	2.50	Add 200 µl S1 + 600 µl diluent
<b>S3</b>	0.63	Add 200 µl S2 + 600 µl diluent
<b>S4</b>	0.16	Add 200 µl S3 + 600 µl diluent
<b>S5</b>	0.04	Add 200 µl S4 + 600 µl diluent
<b>S6</b>	0.01	Add 200 µl S5 + 600 µl diluent
<b>S0</b>	0.00	500 µl diluent

### CROSS REACTION:

PEPTIDE	%
Secretin	100
Secretin (porcine)	100
Secretin (rat)	100
Secretin (chicken)	0
VIP (human, bovine, porcine, rat)	0
CCK Octapeptide (desulfated)	0
Substance P	0
Somatostatin-14	0
NPY (porcine)	0
Met-Enkephalin	0
Insulin (human)	0
PHI (porcine)	0
Amylin (human)	0