

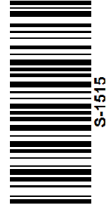


Peninsula Laboratories International, Inc.

305 Old County Road, San Carlos, CA 94070

Tel: (650) 801-6090

Fax: (650) 595-4071



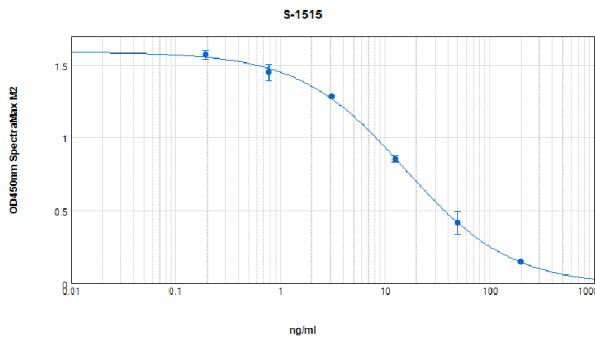
Cat. No. S-1515

Prostate-Specific Antigen (PSA) (243-261) (for human serum and plasma samples)

SPECIFICATIONS: Extraction-free kit for human serum/plasma

STANDARD: 1 μ g H-Tyr-Thr-Lys-Val-Val-His-Tyr-Arg-Lys-Trp-Ile-Lys-Asp-Thr-Ile-Val-Ala-Asn-Pro-OH

PROTOCOL: V (Ab1hr.Std2hr.BtON)
RANGE: 0-200 ng/ml
AVERAGE IC₅₀: 15 ng/ml
SHELF-LIFE: One year from production date



Suggested Preparation of Standards		
	ng/ml	Range: 0.20 to 200 ng/ml
Stock	1000	
S1	200.00	Add 200 μ l stock + 800 μ l diluent
S2	50.00	Add 200 μ l S1 + 600 μ l diluent
S3	12.50	Add 200 μ l S2 + 600 μ l diluent
S4	3.13	Add 200 μ l S3 + 600 μ l diluent
S5	0.78	Add 200 μ l S4 + 600 μ l diluent
S6	0.20	Add 200 μ l S5 + 600 μ l diluent
S0	0.00	500 μ l diluent

CROSS REACTION:

PEPTIDE	%
Prostate-Specific Antigen (PSA) (243-261)	100
Beta-Casomorphin-5	0
Beta-Casomorphin-7	0