



Peninsula Laboratories International, Inc.

305 Old County Road, San Carlos, CA 94070
Tel: (650) 801-6090
Fax: (650) 595-4071

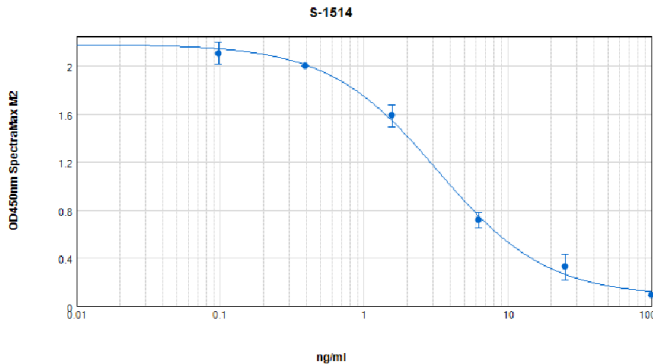


Cat. No. S-1514 Prostate-Specific Antigen (PSA) (243-261)

SPECIFICATIONS: Formulated for extracted samples

STANDARD: 1 µg H-Tyr-Thr-Lys-Val-Val-His-Tyr-Arg-Lys-Trp-Ile-Lys-Asp-Thr-Ile-Val-Ala-Asn-Pro-OH

PROTOCOL: III (Std.Ab1hr.Bt)
RANGE: 0-100 ng/ml
AVERAGE IC₅₀: 5 ng/ml
SHELF-LIFE: One year from production date



Suggested Preparation of Standards		
	ng/ml	Range: 0.10 to 100 ng/ml
Stock	1000	
S1	100.00	Add 100 µl stock + 900 µl diluent
S2	25.00	Add 200 µl S1 + 600 µl diluent
S3	6.25	Add 200 µl S2 + 600 µl diluent
S4	1.56	Add 200 µl S3 + 600 µl diluent
S5	0.39	Add 200 µl S4 + 600 µl diluent
S6	0.10	Add 200 µl S5 + 600 µl diluent
S0	0.00	500 µl diluent

CROSS REACTION:

PEPTIDE	%
Prostate-Specific Antigen (PSA) (243-261)	100
Beta-Casomorphin-5	0
Beta-Casomorphin-7	0