



Peninsula Laboratories International, Inc.

305 Old County Road, San Carlos, CA 94070

Tel: (650) 801-6090

Fax: (650) 595-4071



Cat. No. S-1513

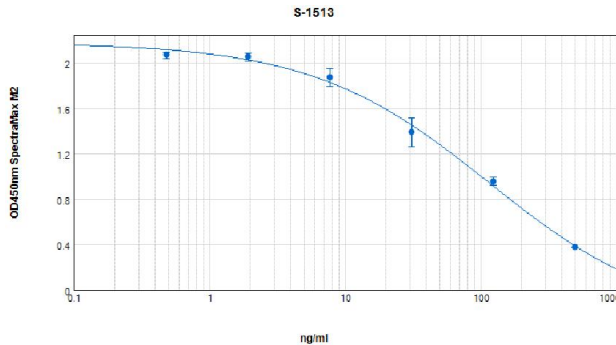
Thymosin β -4 (human, bovine, horse, rat)

(for human serum and plasma samples)

SPECIFICATIONS: Extraction-free kit for human serum/plasma

STANDARD: 1ug Ac-Ser-Asp-Lys-Pro-Asp-Met-Ala-Glu-Ile-Glu-Lys-Phe-Asp-Lys-Ser-Lys-Leu-Lys-Lys-Thr-Glu-Thr-Gln-Glu-Lys-Asn-Pro-Leu-Pro-Ser-Lys-Glu-Thr-Ile-Glu-Gln-Glu-Lys-Gln-Ala-Gly-Glu-Ser-OH

PROTOCOL: IV (Std.AbON.Bt)
RANGE: 0-500ng/ml
AVERAGE IC₅₀: 80 ng/ml
SHELF-LIFE: One year from production date



Suggested Preparation of Standards		
	ng/ml	Range: 0.49 to 500 ng/ml
Stock	1000	
S1	500.00	Add 250 μ l stock + 250 μ l diluent
S2	125.00	Add 200 μ l S1 + 600 μ l diluent
S3	31.25	Add 200 μ l S2 + 600 μ l diluent
S4	7.81	Add 200 μ l S3 + 600 μ l diluent
S5	1.95	Add 200 μ l S4 + 600 μ l diluent
S6	0.49	Add 200 μ l S5 + 600 μ l diluent
S0	0.00	500 μ l diluent

CROSS REACTION:

PEPTIDE	%
Thymosin β -4 (human, bovine, horse, rat)	100
Thymosin β -10	0
Thymosin β -1	0