



# Peninsula Laboratories International, Inc.

305 Old County Road, San Carlos, CA 94070

Tel: (650) 801-6090

Fax: (650) 595-4071



## Cat. No. S-1511 Glucagon-Like Peptide 1 (GLP-1) (32-36) amide (human, mouse, rat)

**SPECIFICATIONS:** Formulated for extracted samples

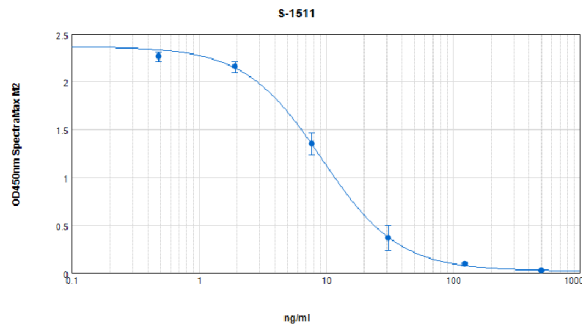
**STANDARD:** 1 µg H- Leu-Val-Lys-Gly-Arg-NH<sub>2</sub>

**PROTOCOL:** III (Std.Ab1hr.Bt)

**RANGE:** 0-500 ng/ml

**AVERAGE IC<sub>50</sub>:** 13 ng/ml

**SHELF-LIFE:** One year from production date



Suggested Preparation of Standards		
	ng/ml	Range: 0.49 to 500 ng/ml
<b>Stock</b>	1000	
<b>S1</b>	500.00	Add 250 µl stock + 250 µl diluent
<b>S2</b>	125.00	Add 200 µl S1 + 600 µl diluent
<b>S3</b>	31.25	Add 200 µl S2 + 600 µl diluent
<b>S4</b>	7.81	Add 200 µl S3 + 600 µl diluent
<b>S5</b>	1.95	Add 200 µl S4 + 600 µl diluent
<b>S6</b>	0.49	Add 200 µl S5 + 600 µl diluent
<b>S0</b>	0.00	500 µl diluent

### CROSS REACTION:

PEPTIDE	%
GLP-1 (32-36) amide	100
GLP-1 (28-36) amide (human, mouse, rat)	100
GLP-1 (7-36) amide (human, bovine, guinea pig, mouse, rat)	100
GLP-1 (9-36) amide (human)	29
GLP-1 (human)	0
GLP-1 (7-37) (human, bovine, guinea pig, mouse, rat)	0