



Peninsula Laboratories International, Inc.

305 Old County Road, San Carlos, CA 94070

Tel: (650) 801-6090

Fax: (650) 595-4071



Cat. No. S-1510 Caerulein

SPECIFICATIONS: Formulated for extracted samples

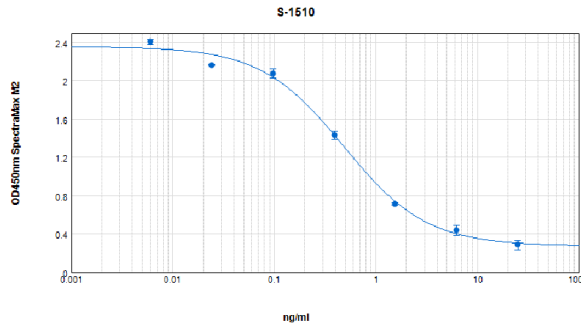
STANDARD: 1 μ g H- Pyr-Gln-Asp-Tyr(SO₃H)-Thr-Gly-Trp-Met-Asp-Phe-NH₂

PROTOCOL: III (Std.Ab1hr.Bt)

RANGE: 0-25 ng/ml

AVERAGE IC₅₀: 0.6 ng/ml

SHELF-LIFE: One year from production date



| Suggested Preparation of Standards | | |
|------------------------------------|-------|--|
| | ng/ml | Range: 0.02 to 25 ng/ml |
| Stock | 1000 | |
| S1 | 25.00 | Add 25 μ l stock + 975 μ l diluent |
| S2 | 6.25 | Add 200 μ l S1 + 600 μ l diluent |
| S3 | 1.56 | Add 200 μ l S2 + 600 μ l diluent |
| S4 | 0.39 | Add 200 μ l S3 + 600 μ l diluent |
| S5 | 0.10 | Add 200 μ l S4 + 600 μ l diluent |
| S6 | 0.02 | Add 200 μ l S5 + 600 μ l diluent |
| S0 | 0.00 | 500 μ l diluent |

CROSS REACTION:

| PEPTIDE | % |
|-----------|-----|
| Caerulein | 100 |