



Peninsula Laboratories International, Inc.

305 Old County Road, San Carlos, CA 94070

Tel: (650) 801-6090

Fax: (650) 595-4071



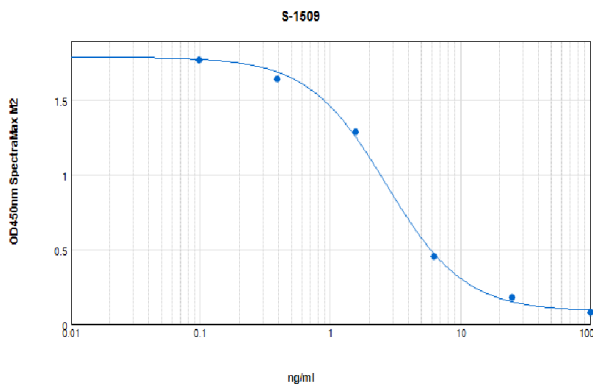
Cat. No. S-1509

Lixisenatide (Des-38-proline-exendin-4 (*Heloderma suspectum*)-(1-39)-peptidylpenta-L-lysyl-L-lysynamide)

SPECIFICATIONS: Formulated for extracted samples

STANDARD: 1 µg H-His-Gly-Glu-Gly-Thr-Phe-Thr-Ser-Asp-Leu-Ser-Lys-Gln-Met-Glu-Glu-Glu-Ala-Val-Arg-Leu-Phe-Ile-Glu-Trp-Leu-Lys-Asn-Gly-Gly-Pro-Ser-Ser-Gly-Ala-Pro-Pro-Ser-Lys-Lys-Lys-Lys-Lys-Lys-NH₂

PROTOCOL: III (Std.Ab1hr.Bt)
RANGE: 0-100 ng/ml
AVERAGE IC₅₀: 2.8 ng/ml
SHELF-LIFE: One year from production date



Suggested Preparation of Standards		
	ng/ml	Range: 0.10 to 100 ng/ml
Stock	1000	
S1	100.00	Add 100 µl stock + 900 µl diluent
S2	25.00	Add 200 µl S1 + 600 µl diluent
S3	6.25	Add 200 µl S2 + 600 µl diluent
S4	1.56	Add 200 µl S3 + 600 µl diluent
S5	0.39	Add 200 µl S4 + 600 µl diluent
S6	0.10	Add 200 µl S5 + 600 µl diluent
S0	0.00	500 µl diluent

CROSS REACTION:

PEPTIDE	%
Lixisenatide	100