



Peninsula Laboratories International, Inc.

305 Old County Road, San Carlos, CA 94070

Tel: (650) 801-6090

Fax: (650) 595-4071

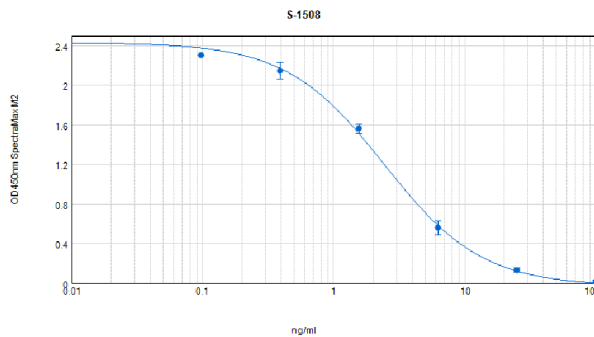


Cat. No. S-1508 ELABELA (human)

SPECIFICATIONS: Formulated for extracted samples

STANDARD: 1 μ g H-Gln-Arg-Pro-Val-Asn-Leu-Thr-Met-Arg-Arg-Lys-Leu-Arg-Lys-His-Asn-Cys-Leu-Gln-Arg-Arg-Cys-Met-Pro-Leu-His-Ser-Arg-Val-Pro-Phe-Pro-OH, Disulfide bridge

PROTOCOL: III (Std.Ab1hr.Bt)
RANGE: 0-100 ng/ml
AVERAGE IC₅₀: 2.0 ng/ml
SHELF-LIFE: One year from production date



| Suggested Preparation of Standards | | |
|------------------------------------|--------|---|
| | ng/ml | Range: 0.10 to 100 ng/ml |
| Stock | 1000 | |
| S1 | 100.00 | Add 100 μ l stock + 900 μ l diluent |
| S2 | 25.00 | Add 200 μ l S1 + 600 μ l diluent |
| S3 | 6.25 | Add 200 μ l S2 + 600 μ l diluent |
| S4 | 1.56 | Add 200 μ l S3 + 600 μ l diluent |
| S5 | 0.39 | Add 200 μ l S4 + 600 μ l diluent |
| S6 | 0.10 | Add 200 μ l S5 + 600 μ l diluent |
| S0 | 0.00 | 500 μ l diluent |

CROSS REACTION:

| PEPTIDE | % |
|-------------------|-----|
| ELABELA (human) | 100 |
| ELABELA (rat) | 0.1 |
| Apelin-13 | 0 |
| Apelin-17 | 0 |
| (Pyr-1) Apelin-13 | 0 |