



# Peninsula Laboratories International, Inc.

305 Old County Road, San Carlos, CA 94070

Tel: (650) 801-6090

Fax: (650) 595-4071

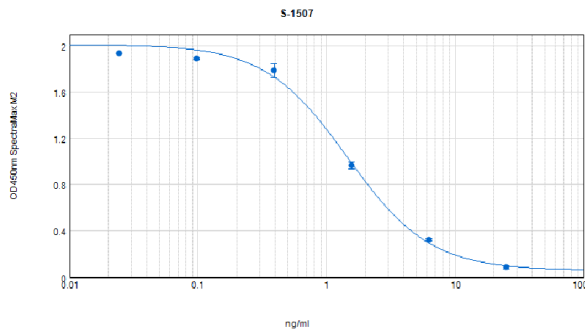


## Cat. No. S-1507 Lactoferricin B25 (bovine)

**SPECIFICATIONS:** Formulated for extracted samples

**STANDARD:** 1 µg H-Phe-Lys-Cys-Arg-Arg-Trp-Gln-Trp-Arg-Met-Lys-Lys-Leu-Gly-Ala-Pro-Ser-Ile-Thr-Cys-Val-Arg-Arg-Ala-Phe-OH

**PROTOCOL:** III (Std.Ab1hr.Bt)  
**RANGE:** 0-25 ng/ml  
**AVERAGE IC<sub>50</sub>:** 1.5 ng/ml  
**SHELF-LIFE:** One year from production date



Suggested Preparation of Standards		
	ng/ml	Range: 0.02 to 25 ng/ml
<b>Stock</b>	1000	
<b>S1</b>	25.00	Add 25 µl stock + 975 µl diluent
<b>S2</b>	6.25	Add 200 µl S1 + 600 µl diluent
<b>S3</b>	1.56	Add 200 µl S2 + 600 µl diluent
<b>S4</b>	0.39	Add 200 µl S3 + 600 µl diluent
<b>S5</b>	0.10	Add 200 µl S4 + 600 µl diluent
<b>S6</b>	0.02	Add 200 µl S5 + 600 µl diluent
<b>S0</b>	0.00	500 µl diluent

### CROSS REACTION:

PEPTIDE	%
Lactoferricin B25 (bovine)	100
Beta Casomorphin-5 (bovine)	0
Beta Casomorphin-7 (bovine)	0