



Peninsula Laboratories International, Inc.

305 Old County Road, San Carlos, CA 94070

Tel: (650) 801-6090

Fax: (650) 595-4071



Cat. No. S-1414 WE-14 (human)

SPECIFICATIONS: Formulated for extracted samples

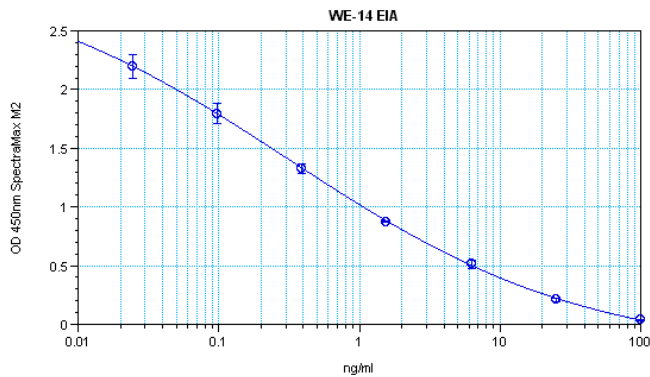
STANDARD: 1 µg H-8680 H-Trp-Ser-Lys-Met-Asp-Gln-Leu-Ala-Lys-Glu-Leu-Thr-Ala-Glu-OH

PROTOCOL: III (Std.Ab1hr.Bt)

RANGE: 0-100 ng/ml

AVERAGE IC₅₀: 1.0 ng/ml

SHELF-LIFE: One year from production date



Suggested Preparation of Standards		
	ng/ml	Range: 0.10 to 100 ng/ml
Stock	1000	
S1	100.00	Add 100 µl stock + 900 µl diluent
S2	25.00	Add 200 µl S1 + 600 µl diluent
S3	6.25	Add 200 µl S2 + 600 µl diluent
S4	1.56	Add 200 µl S3 + 600 µl diluent
S5	0.39	Add 200 µl S4 + 600 µl diluent
S6	0.10	Add 200 µl S5 + 600 µl diluent
S0	0.00	500 µl diluent

$y = ((A - D) / (1 + (x/C)^B)) + D$; A: 3.057 B: 0.41 C: 0.314 D: -0.249 R²: 1
 Plot#1 (Group#1: Concentration vs MeanValue)

CROSS REACTION:

PEPTIDE	%
WE-14	100
Pancreastatin	0
Catestatin	≤ 0.01