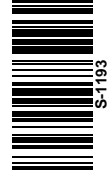




Peninsula Laboratories International, Inc.

305 Old County Road, San Carlos, CA 94070
Tel: (650) 801-6090
Fax: (650) 595-4071



Cat. No. S-1193 C-Type Natriuretic Peptide (CNP) (32-53) (human, rat, porcine)

SPECIFICATIONS: Formulated for extracted samples

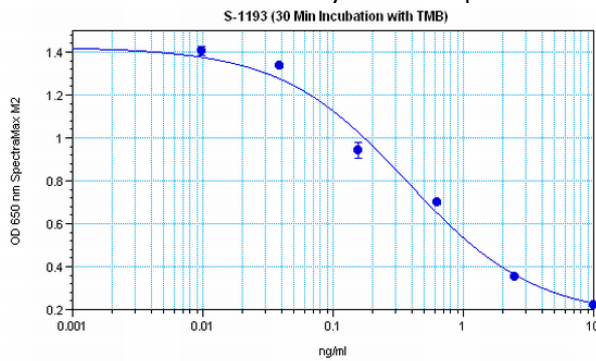
STANDARD: 1 µg H-1296 H-Gly-Leu-Ser-Lys-Gly-Cys-Phe-Gly-Leu-Lys-Leu-Asp-Arg-Ile-Gly-Ser-Met-Ser-Gly-Leu-Gly-Cys-OH, (Disulfide bond)

PROTOCOL: III (Std.Ab1hr.Bt)

RANGE: 0-10 ng/ml

AVERAGE IC₅₀: 0.34 ng/ml

SHELF-LIFE: One year from production date



Suggested Preparation of Standards		
	ng/ml	Range: 0.01 to 10 ng/ml
Stock	1000	
S1	10.00	Add 10 µl stock + 990 µl diluent
S2	2.50	Add 200 µl S1 + 600 µl diluent
S3	0.63	Add 200 µl S2 + 600 µl diluent
S4	0.16	Add 200 µl S3 + 600 µl diluent
S5	0.04	Add 200 µl S4 + 600 µl diluent
S6	0.01	Add 200 µl S5 + 600 µl diluent
S0	0.00	500 µl diluent

$y = ((A - D)/(1 + (x/C)^B)) + D$
 S-1212 (Group#1: Concentration vs Mean/Value) A: 1.423 B: 0.889 C: 0.372 D: 0.165 R²: 0.989

CROSS REACTION:

PEPTIDE	%
CNP (32-53) (human, rat, porcine)	100
CNP (1-53) (rat, porcine)	100
CNP (1-29) (rat, porcine)	0
BNP-32 (rat)	0
BNP-45 (rat)	0
BNP-26 (porcine)	0
ANF (1-28) (human)	0
ANF (1-28) (rat)	0
Thr-Ala-Pro-Arg-Atrial Natriuretic Factor (1-28) (human)	0
Endothelin-1 (human, canine, porcine, rat, mouse, bovine)	0
Angiotensin II	0
Substance P	0